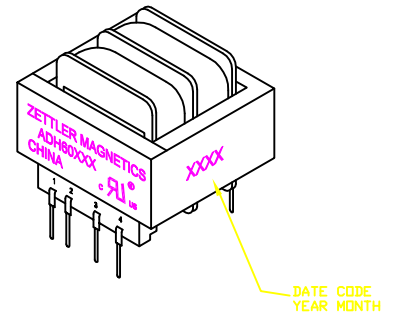


TRANSFORMER, POWER, PCB, 20VA
 DUAL 115/230V PRIMARIES AND DUAL SECONDARIES

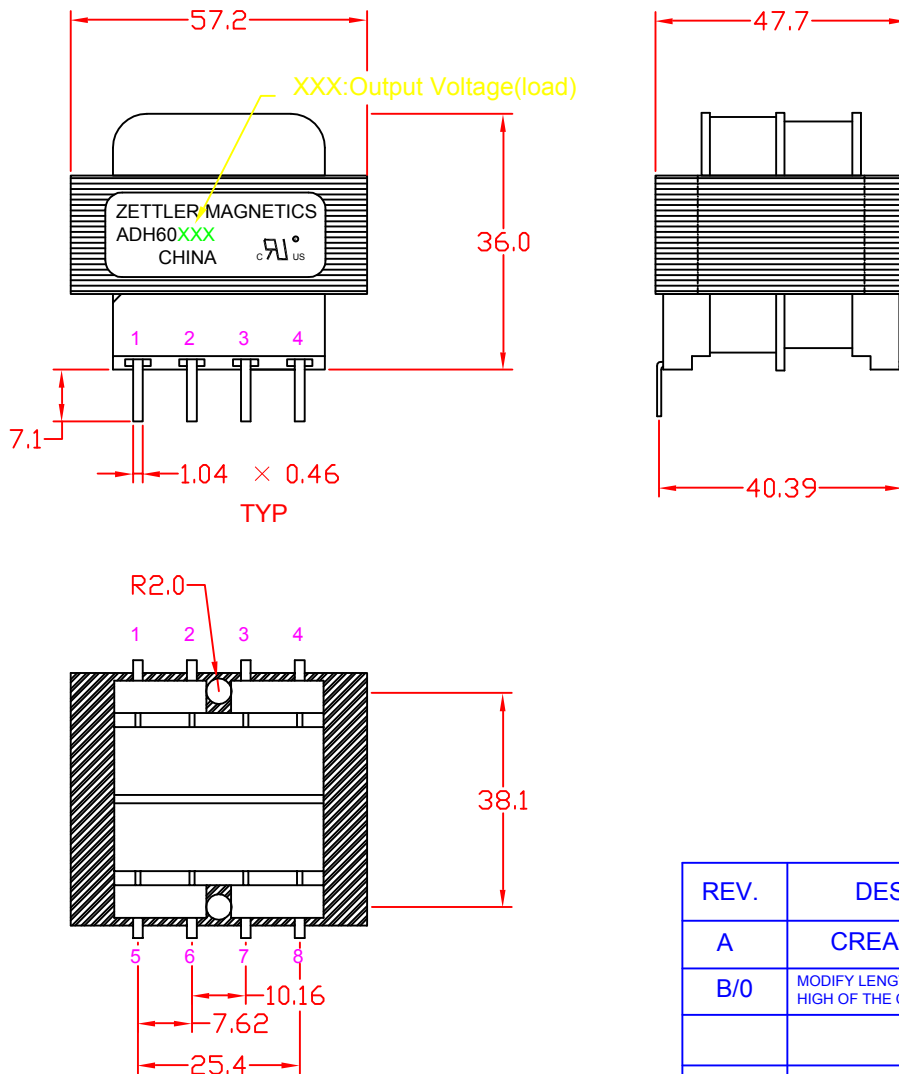
1. ELECTRICAL SPECIFICATIONS:

- A. Maximum Power: 20VA
- B. Input Voltage and Frequency: 115/230V± 10% @ 50/60Hz
- C. Secondary Voltage: See Electrical Table
- D. Temperature Rise: 45° C MAX allowed
- E. Excitation Current: 55 mA MAX
- F. Hi-Pot: 2500Vrms 1 minute @ Pri. to Sec.
 1500Vrms 1 minute @ Pri. to Core
 1500Vrms 1 minute @ Sec. to Core
- G. Safety:

Insulation System ZM-130-5, Class B, UL File No.E177235
 UL506, General Purpose, US and Canada, File No.E177998



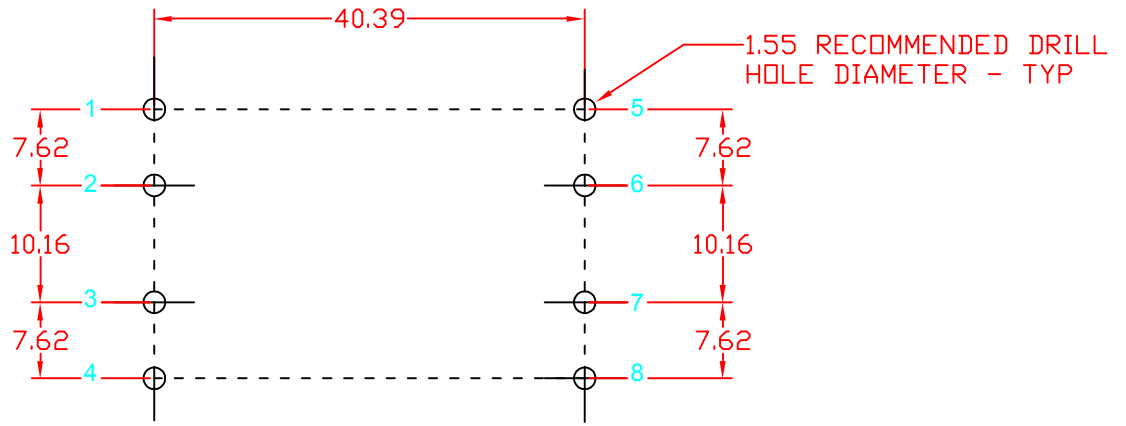
2. MECHANICAL SPECIFICATIONS:



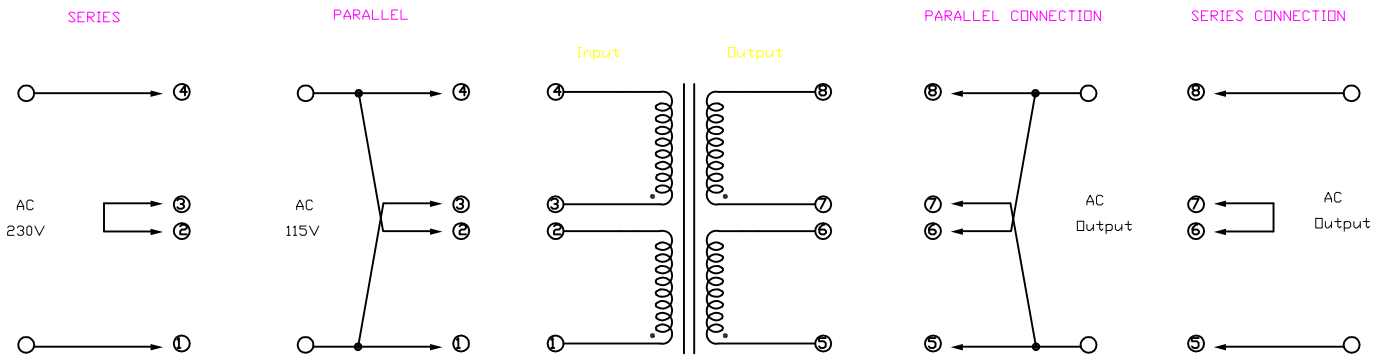
REV.	DESCRIPTION	DRAWN	DATE(M/D/Y)
A	CREATED DRAWING	ZHENG	June 17,2002
B/0	MODIFY LENGTHS OF THE PIN,ADD THE HIGH OF THE CENTER BOBBIN WALL	ye	June 12,2006

TOLERANCE	SCALE NOT 1:1	UNIT mm	DATE (M/D/Y)	MODEL DESCRIPTION	
X	±0.3	DRAWN	ye	ZETTLER MAGNETICS TITLE ADH600 SERIES PCD	
X.X	±0.2	CHECKED			
X.XX	±0.1	QC			
THICKNESS	/	APPROVED			
REV.	B/0	E:\ACAD\ADH600SERIES\ADH600SERIESPCD		MATERIAL Class B 130° C	
				MODEL: ADH600 SERIES	
				SHEET: 1 OF 2	

3. MOUNTING FOOTPRINT:



4. SCHEMATIC DIAGRAM:



5. ELECTRICAL TABLE:

INPUT	SERIES / PARALLEL			
	PARALLEL CONNECTION		SERIES CONNECTION	
OUTPUT	AC VOLTS	RMS AMPS	AC VOLTS	RMS AMPS
ADH60010	5V	4A	10V	2A
ADH60012	6.3V	3.2A	12.6V	1.6A
ADH60016	8V	2.5A	16V	1.25A
ADH60020	10V	2.0A	20V	1.0A
ADH60024	12V	1.6A	24V	0.8A
ADH60028	14V	1.4A	28V	0.7A
ADH60036	18V	1.1A	36V	0.55A
ADH60048	24V	0.8A	48V	0.4A
ADH60056	28V	0.7A	56V	0.35A
ADH600120	60V	0.32A	120V	0.16A

REV.	DESCRIPTION	DRAWN	DATE(M/D/Y)
A	CREATED DRAWING	ZHENG	June 17,2002
B/0	MODIFY LENGTHS OF THE PIN,ADD THE HIGH OF THE CENTER BOBBIN WALL	ye	June 12,2006

TOLERANCE	SCALE NOT 1:1	UNIT mm	DATE (M/D/Y)	MODEL DESCRIPTION		
X	±0.3	DRAWN	ye	ZETTLER MAGNETICS		MATERIAL Class B 130° C
X.X	±0.2	CHECKED				MODEL: ADH600 SERIES
X.XX	±0.1	QC		TITLE ADH600 SERIES PCD		SHEET: 2 OF 2
THICKNESS	/	APPROVED				
REV.	B/0	E:\ACAD\ADH600SERIES\ADH600SERIESPCD				